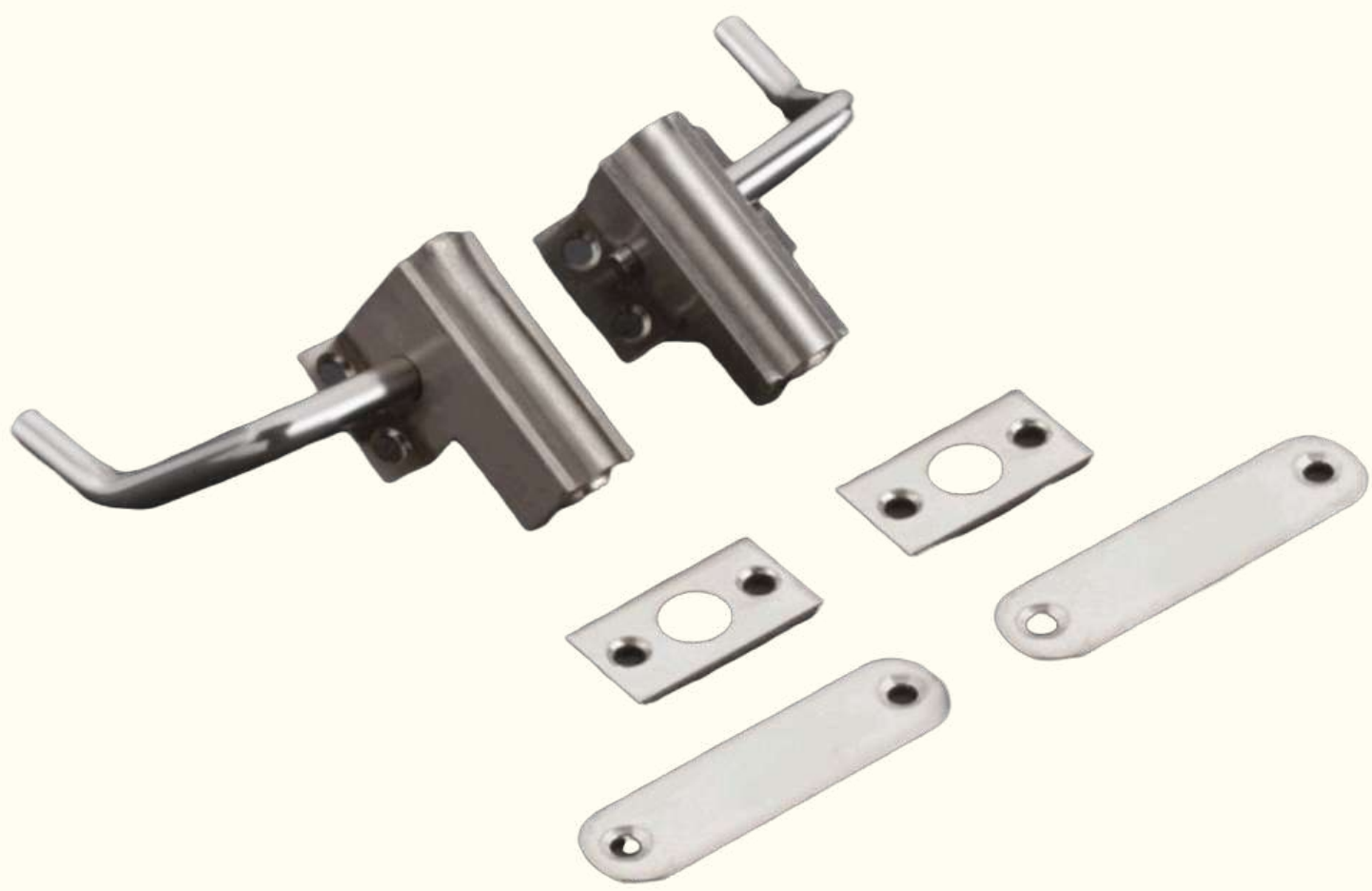




# HARDWARE ACCESSORIES



**Brass Cambolt Heavy  
350 SET**

## **Brass U Bracket**

**Size : 2x6 - 52 | 2x8 - 56 | 2x12 - 64**



## **Brass D Bracket**

**Size : 2x6 - 34 | 2x8 - 37 | 2x12 - 42**

# HARDWARE ACCESSORIES



**Brass Folding Bracket**

**Size : 2x6 - 88 | 2x8 - 92 | 2x12 - 104**

**10MM Adjustable F Bracket Ss**

**Size : 4" - 92 | 6" - 114 | 8" - 134**

**10" - 154 | 12" - 174**



**8MM Fix F Bracket Ss**

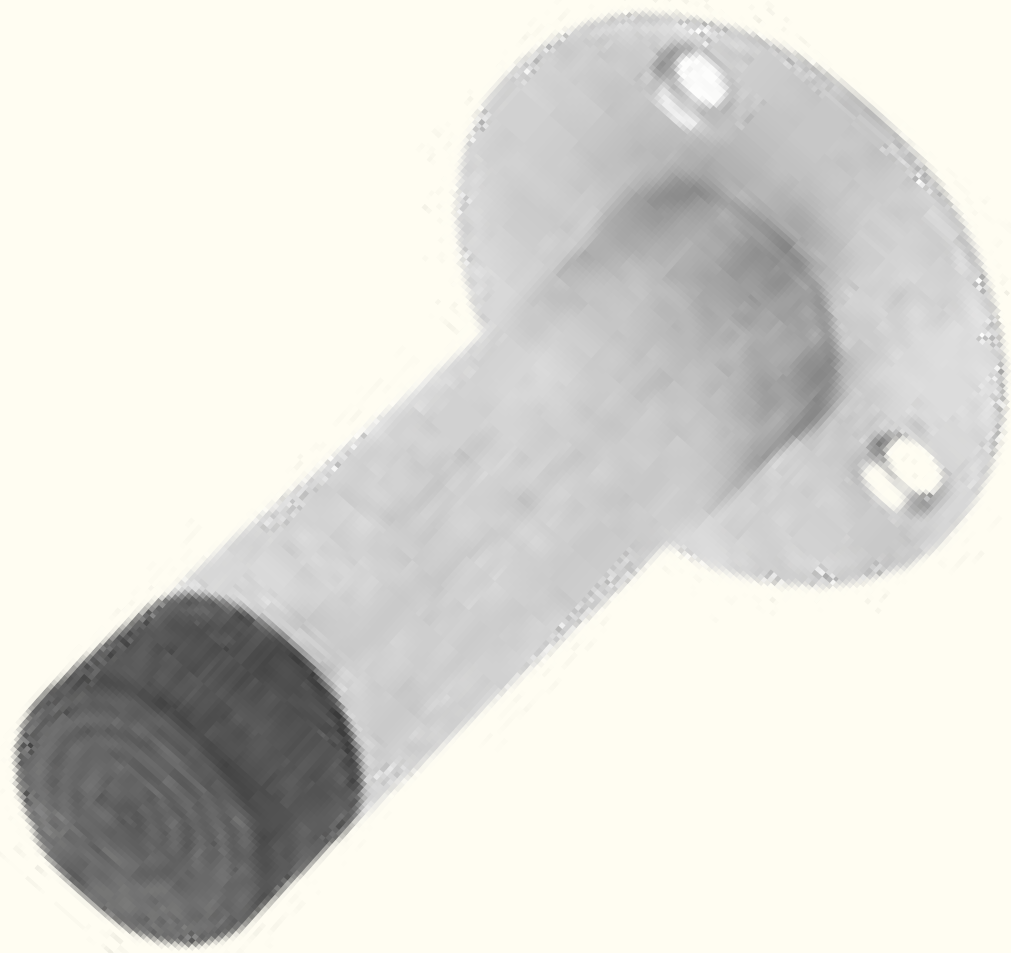
**Size : 4x6"/8"/12" - 60**

**6x6"/8"/12" - 70**

**8x6"/8"/12" - 80**

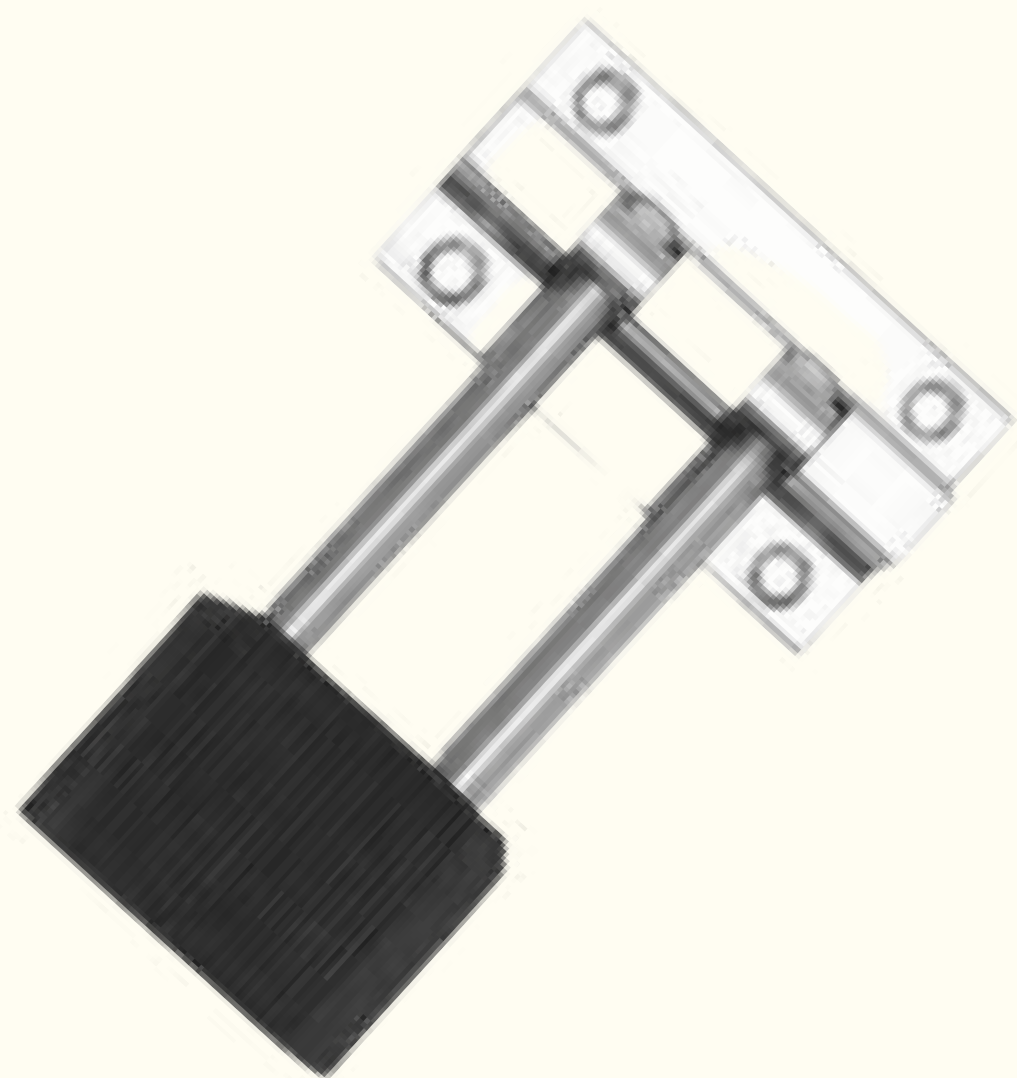
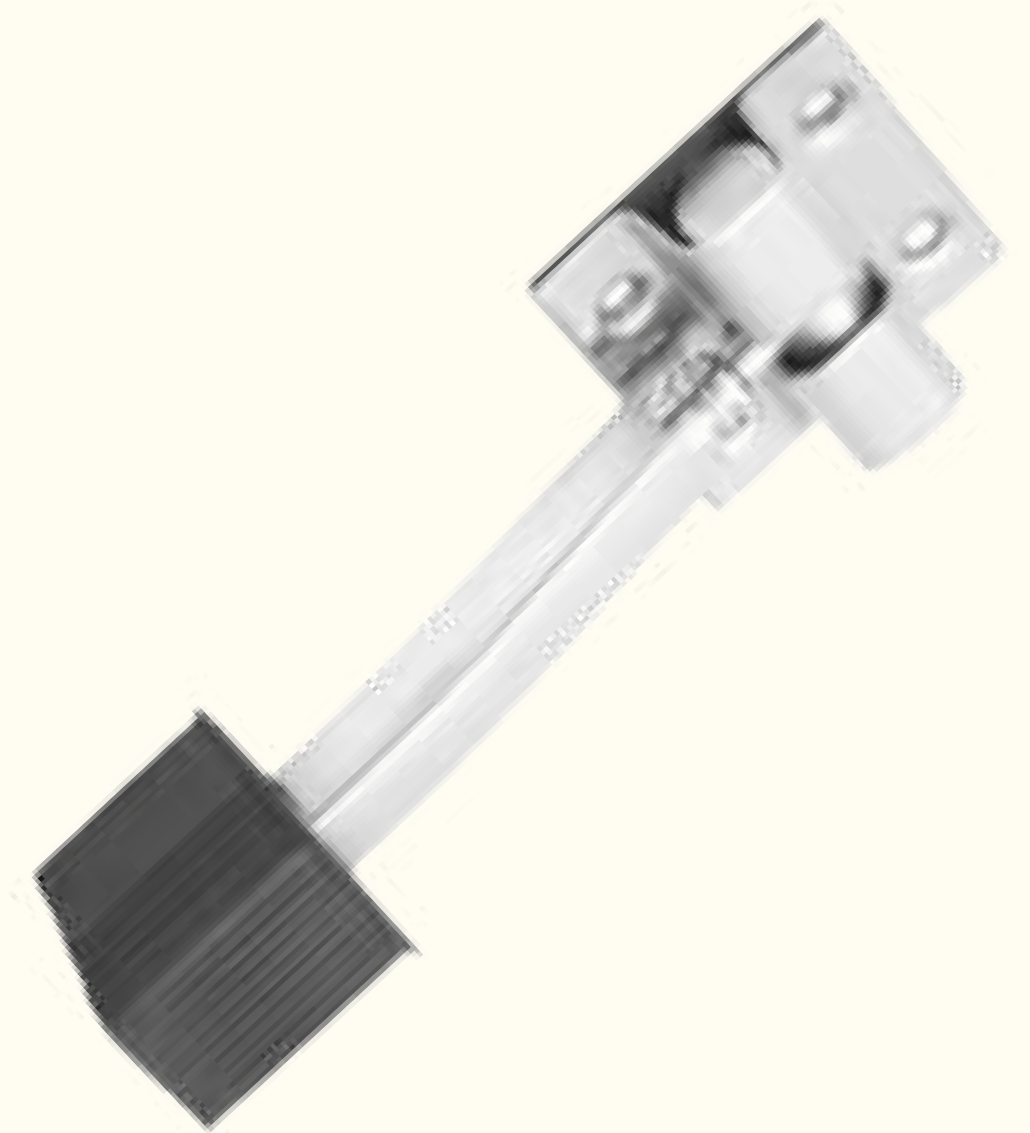


# HARDWARE ACCESSORIES



**Ss Door Silencer**  
**Size : 3" - 76**

**Ss Door Stopper Single - 76**



**Ss Door Stopper Double -**  
**120**

# HARDWARE ACCESSORIES



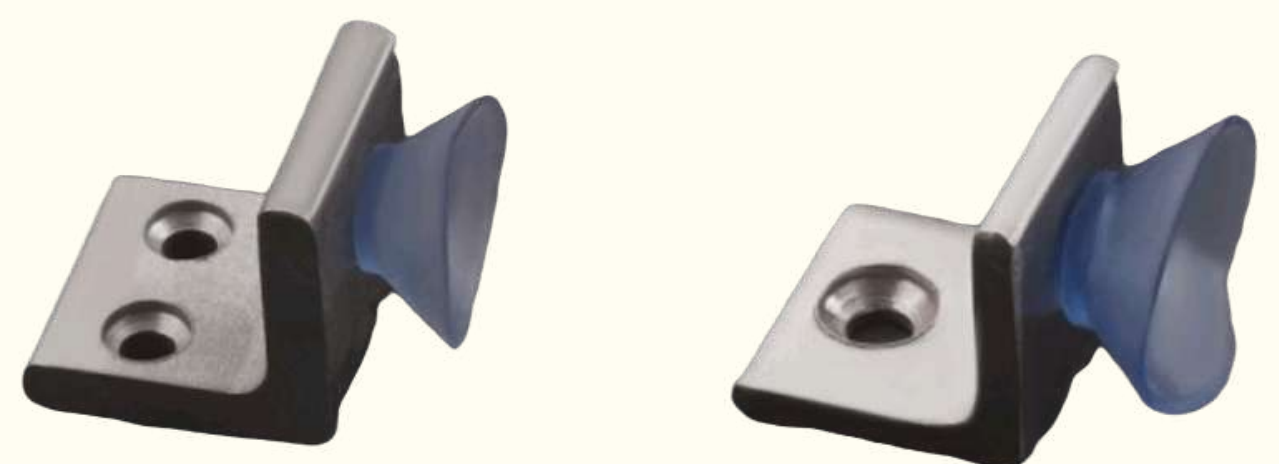
**Alu L button**  
Size : ¾" - 9 | 1" - 14

**SS L button**  
Size : ¾" - 9 | 1" - 14



**Brass L button**  
Size : ¾" - 22 | 1" - 30

**SS L button 5mm**  
Size : ¾" - 30 | 1" - 40



# HARDWARE ACCESSORIES



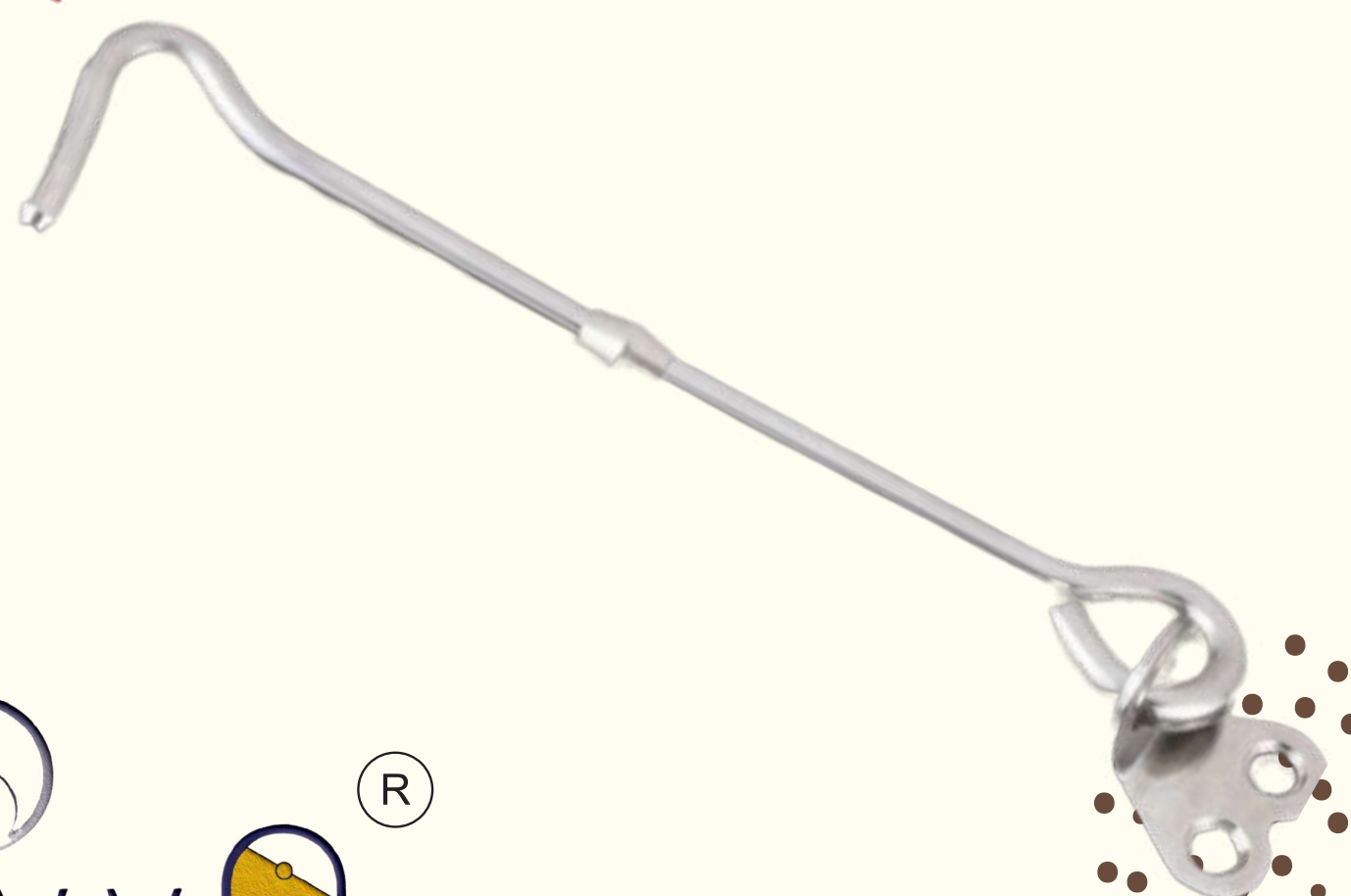
**Round Ss Gate Hook**  
Size : 6" - 22

**Square Ss Gate Hook**  
Size : 6" - 34



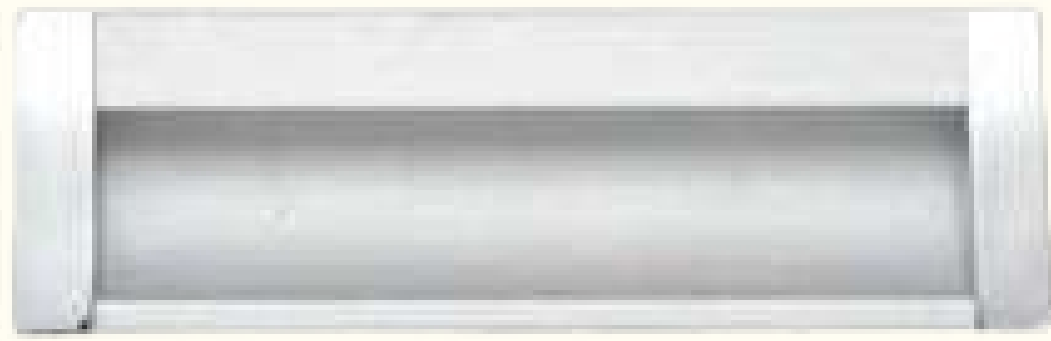
**Brass Gate Hook Antq**  
Size : 6" - 110

**Brass Gate Hook Ss**  
Size : 6" - 96





# HARDWARE ACCESSORIES



**Alu Concil Handle Ss & Wengi**  
**Size : 4" - 96 | 6" - 116 | 8" - 136**

**Bed Joint**  
**Ss - 410 | Iron - 240**



**Ss Kadi Chest Handle**  
**3" - 42**

# HARDWARE ACCESSORIES



## Ss Solid Stud

Size :

$\frac{3}{4} \times \frac{3}{4}$  - 40

$\frac{3}{4} \times 1$  - 42

1×1 - 56

1×2 - 90

1×3 - 126

1×4 - 160

1×5 - 196

## Round Mirror Cap Ss

Size :  $\frac{3}{4}$ " - 10 | 1" - 13



## Diamond Mirror Cap

Size :  $\frac{3}{4}$ " - 13 | 1" - 15



# HARDWARE ACCESSORIES



**Mirror Bracket**  
**Half - 38 | Full - 40**

## **Mirror Cap Screw** **1 Grush = 144 Pcs**

**Size :**

**3/4" - 436 | 1/2" - 436 | 1" - 464**  
**1x1/2" - 522 | 2" - 580 | 2x1/2" - 610**  
**3" - 670**



**Machine Screw**  
**1 Kg ( 500 Pcs ) - 380**

# HARDWARE ACCESSORIES



**Concil Heavy 1"**  
**40 Pc**

**Concil Heavy Big 1"**  
**110 Pc**

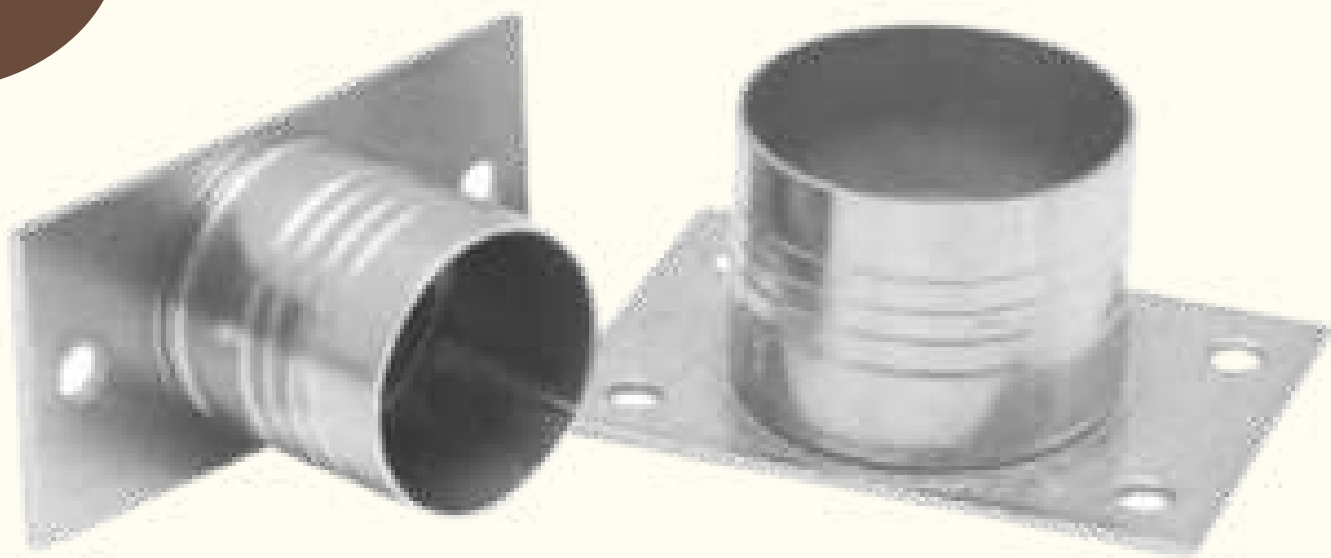


**Concil Regular Light 1"**  
**20 Pc**

**Concil Front Hole 1"**  
**64 Pc**



# HARDWARE ACCESSORIES



**Straight Concil 1"**  
**32 Per Pc**

**Long Bend Concil 1"**  
**1×3" - 62 Per Pc**



**Universal Bracket 1"**  
**30 Per Pc**

**Sort Bend Concil 1"**  
**44 Per Pc**





# HARDWARE ACCESSORIES



**Ss S/L Bracket**

**Size : 6" - 146 | 8" - 166 | 10" - 186  
12" - 208**

**Brass Door Stopper Heavy**  
**Ss Finish - 522 | Antq Finish - 530**



**Aluminium Door Stopper**  
**Ss Finish - 110 | Antq Finish - 120**  
**Rose Gold - 140 | Black Matt - 140**



# HARDWARE ACCESSORIES



## Flap Door Stopper

Cp Finish - 420 | Antq Finish - 460  
Rose Gold - 460 | Black Matt - 460



## Zinc Door Stopper

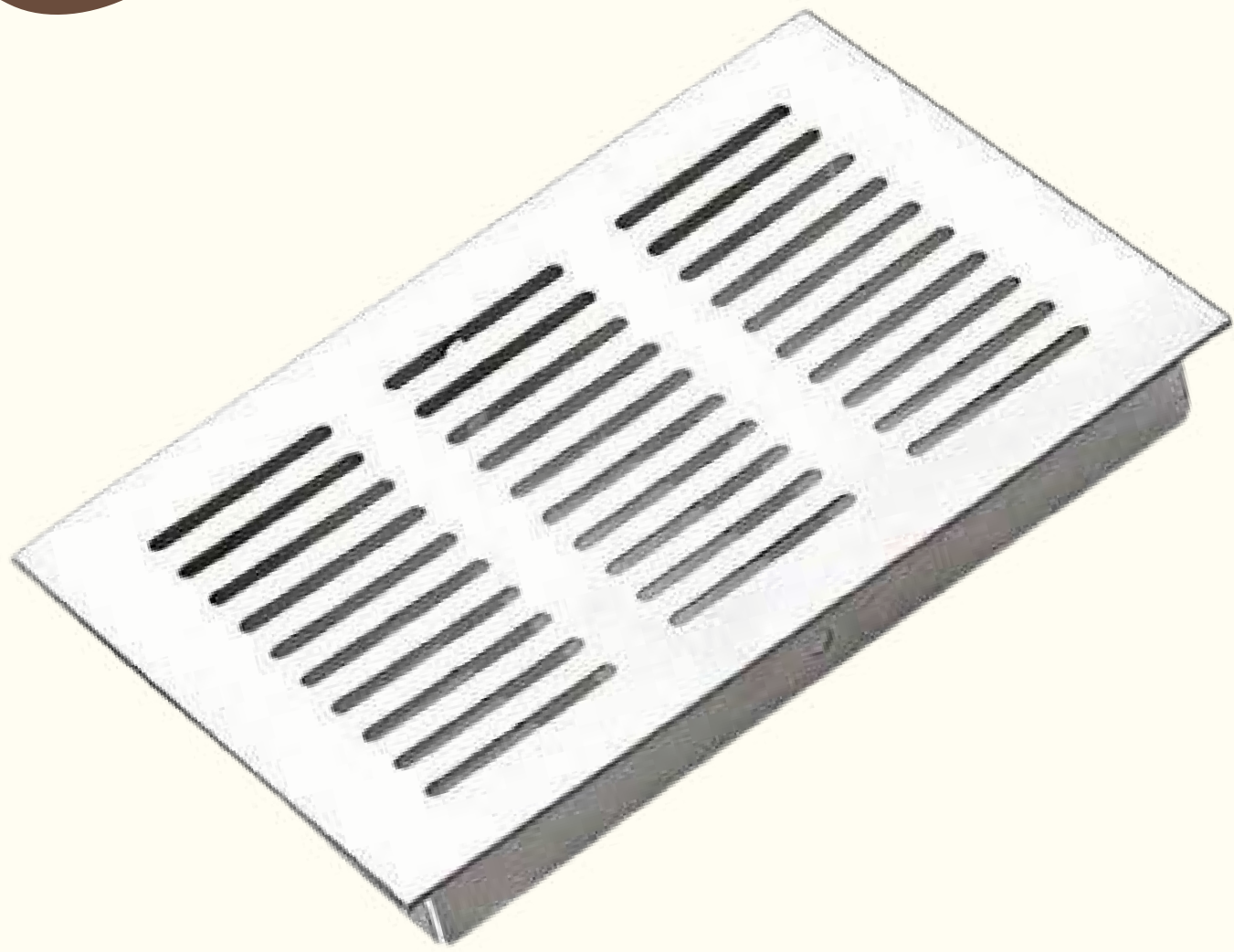
Cp Finish - 300 | Antq Finish - 340  
Rose Gold - 360 | Black Matt - 360



## Aluminium Oval Socket 1" 60 Set



# HARDWARE ACCESSORIES



**SS Kitchen Jali**

**4x4 - 62 | 4x6 - 82 | 4x8 - 102**

**SS Kitchen Jali  
Red Brown White**

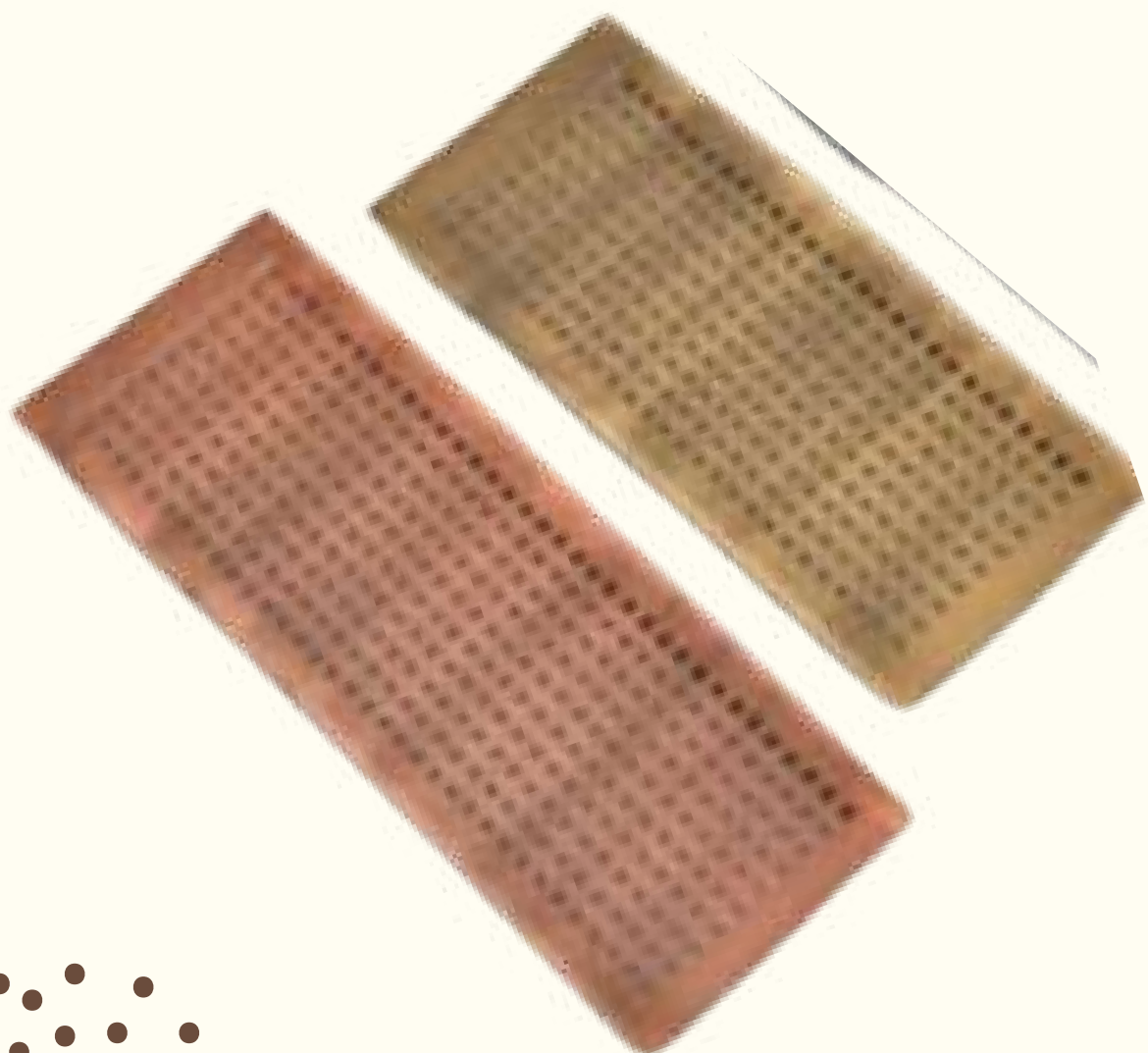
**4x4 - 76 | 4x6 - 94 | 4x8 - 114**



**SS Kitchen Jali**

**Antique Rosegold Blackmatt**

**4x6 - 212 | 4x8 - 270**





# HARDWARE ACCESSORIES



**Door Magnet Stopper**  
Ss - 120 | Antq - 140 Per Pc

**Door Magnet Stopper Heavy**  
Antique Rose Gold Black Matt  
420 Per Pc



**Brass Door Eye**  
Ss - 140 | Antq - 152  
Rose Gold - 172 | Black Matt - 172

# HARDWARE ACCESSORIES



**Magnet**

**No 1 - 19 | No 2 - 21 | No 3 - 25**

**Basket Clip Set  
42 Per Set**



**Pvc Buffer**

**NO 1 TO NO 10 - 540 Per Pkt**

**Vaccum**





# HARDWARE ACCESSORIES



**Carriage Bolt**  
**100Pcs Ss - 800 | Iron - 380**

**Ss Screw Csk**  
**Rate Per 100Pcs**

**13×8 - 124 Pan Head**

**13×4 - 56**

**13×6 - 58**

**19×4 - 66**

**19×6 - 78**

**25×6 - 104**

**25×8 - 138**

**30×7 - 156**

**32×8 - 168**

**35×8 - 180**

**38×8 - 194**

**50×10 - 324**

**60×10 - 634**

**75×10 - 1014**

**100×10 - 1252**





# HARDWARE ACCESSORIES



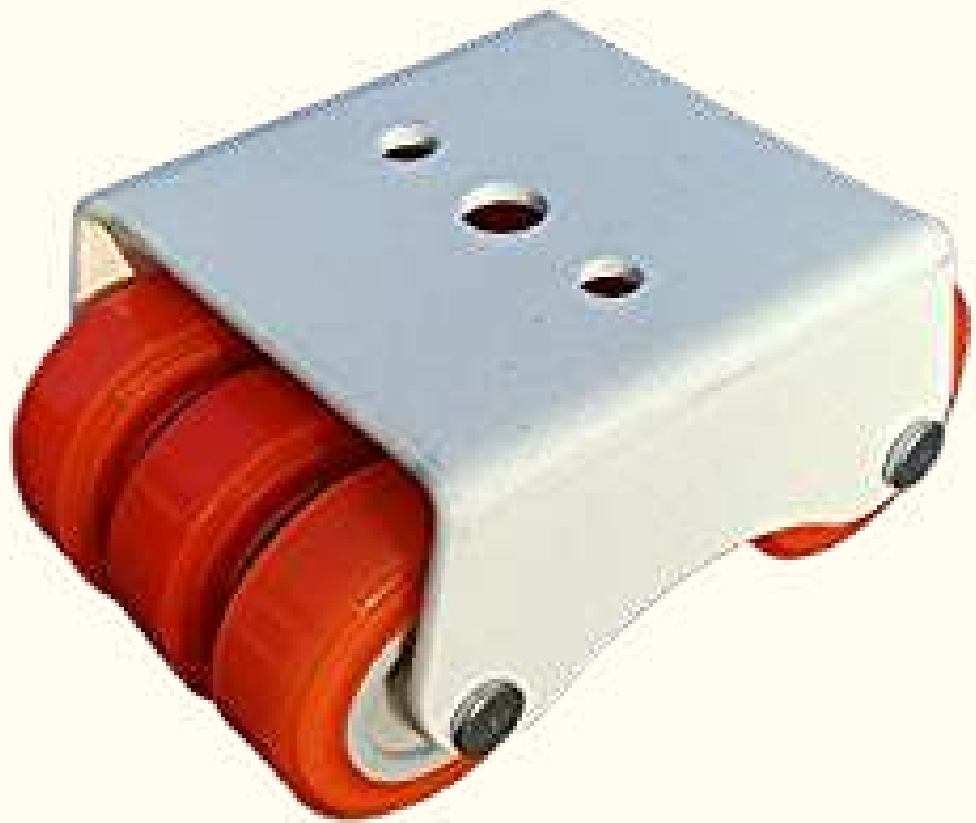
**Pvc Door Silencer**  
2×½" - 38 | 3" - 40

**Door Closer**  
40Kg - 1500 | 65Kg - 1740



**Floor Spring**  
65kg - 3900 | 85Kg - 6600

# HARDWARE ACCESSORIES



**Sixer Wheel Fix**  
**Baby Mini - 220 Set | Mini - 240 Set |**  
**40mm - 320**

**Sixer Wheel Revolving**  
**50mm - 520**





**Marketed By :**

**Hardware Point  
Siliguri**

**[info@stavyaworld.com](mailto:info@stavyaworld.com)**